

S.A.ENGINEERING COLLEGE, CHENNAI-600 077
DEPARTMENT OF INFORMATION TECHNOLOGY

Academic Year: 2018-2019

Year/Sem: II/IV

Dept: IT

Subj Code: CS8492

Subj.Name: DATABASE MANAGEMENT SYSTEMS

COURSE OBJECTIVES:

CO1: To learn the fundamentals of data models and to represent database system using ER Diagrams

CO2: To study SQL and relational database design.

CO3: To understand the internal storage structures using different file and indexing techniques which will help in physical DB design.

CO4: To understand the fundamental concepts of transaction processing-concurrency control techniques and recovery procedures.

CO5: To have an introductory knowledge about the Storage and Query processing Techniques

CO6: To have knowledge in advanced database topics on xml query and information retrieval

COURSE OUTCOMES:

Course Outcomes	Course Outcomes Description
IT403.1	Classify the modern and futuristic database applications based on size and complexity
IT403.2	Map ER-model to Relational model to perform database design effectively
IT403.3	Write queries using normalization criteria and optimize queries
IT403.4	Compare and contrast various indexing strategies in different database systems
IT403.5	Appraise how advanced database differ from traditional databases
IT403.6	Retrieve information using Retrieval models and IR concepts

Mapping of course outcomes with program outcomes

Course Outcomes	Program Outcomes												Program Specific Outcomes	
	PO1	PO2	PO3	PO4	PO5	PO6	PO7	PO8	PO9	PO10	PO11	PO12	PSO 1	PSO 2
IT403.1	3	2	3	2	0	0	0	0	1	1	0	0	3	1
IT403.2	3	2	3	2	0	0	0	0	2	2	0	2	3	1
IT403.3	3	2	3	2	0	0	2	0	1	2	0	2	2	1
IT403.4	3	2	3	3	0	0	2	0	2	3	0	2	3	2
IT403.5	3	2	3	3	0	0	2	0	1	2	0	1	3	2
IT403.6	3	2	3	3	0	2	3	0	2	3	0	3	3	2
Avg	3.00	2.00	3.00	2.50	0.00	0.3	1.50	0.00	1.5	2.17	0.00	1.67	2.83	1.5

Mapping of course outcomes with PSO

PROGRAMME SPECIFIC OUTCOME		
COURSE OUTCOME		
	PSO1	PSO2
IT403.1	3	1
IT403.2	3	1
IT403.3	2	1
IT403.4	2	1
IT403.5	1	3
IT403.6	1	3
Avg	2	1.66

S.A ENGINEERING COLLEGE

DEPARTMENT OF INFORMATION TECHNOLOGY

COURSE NAME: SERVICE ORIENTED ARCHITECTURE

COURSE CODE: IT6801

FACULTY NAME: Mrs.A.M.SERMAKANI

YEAR/SEM: IV/VIII

ACADEMIC YEAR: 2018-2019

BATCH: 2015-2019

COURSE END SURVEY

A – Excellent

B – Good

C – Fair

D - Poor

Sr. No.	Question Text	Extent enhanced by SAEC experience			
		A	B	C	D
1	I have gained basic knowledge in Service Oriented Architecture				
2	I will be able to understand concept of XML and web Services				
3	I will be able to analyse the comparison of XML DTD and XML Schema				
4	I will be able to apply techniques based on XML Namespaces				
5	I will be able to determine the technology correlated with SOA				
6	The course helps me in learning SOA with Its comparison of Web Services				
7	I will be able to find the correlation of SOA and Interoperability techniques				
8	I will be able to develop environment along with SOA and XML				
9	I will be able to develop WS-BPEL with SOA composition				
10	Familiarity with contemporary issues in Service Oriented Architecture				

NAME (Optional):

SIGNATURE :

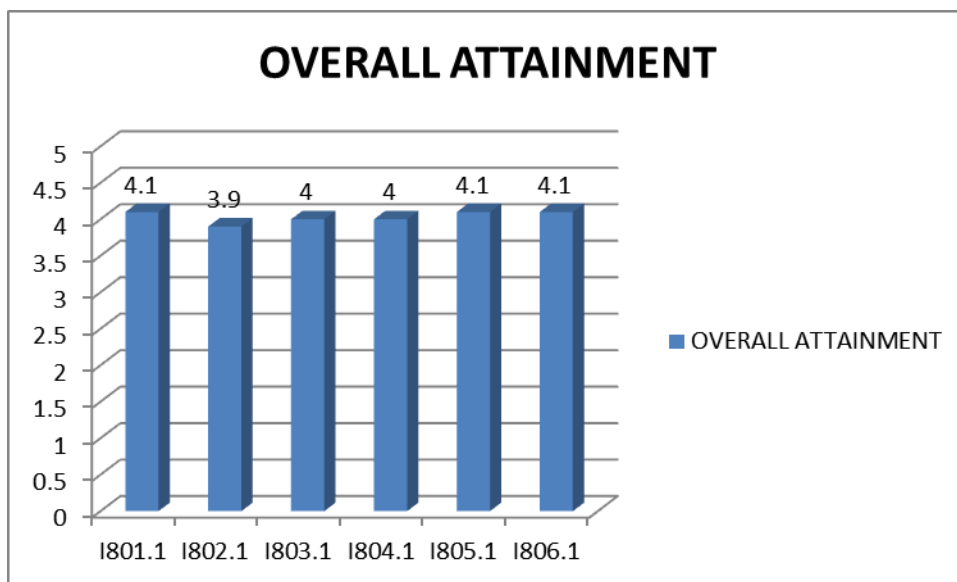
REG. NO. (Optional):

DATE :

- A- 5 MARKS
- B- 4 MARKS
- C- 3 MARKS
- D- 2MARKS

MAPPED PO	MAPPED CO	Attainment Target
PO1,2,11,12	I801.1	4.16
PO1,2,11,12	I801.1	4.13
PO 1,2,3,11,12	I801.2	4.20
PO 1,2,3,11,12	I801.2	4.15
PO 1,2,5,6,7,8,11,12	I801.3	4.18
PO 1,2,5,6,7,8,11,12	I801.3	4.31
PO 1,5,9,12	I801.4	4.20
PO 1,5,9,12	I801.4	4.15
PO 1,2,3,4,7,8,12	I801.5	4.09
PO 1,2,3,5,8,9,11,12	I801.6	4.20

COURSE OUTCOMES	OVERALL ATTAINMENT
I801.1	4.1
I801.2	3.9
I801.3	4
I801.4	4
I801.5	4.1
I801.6	4.1



S.A.ENGINEERING COLLEGE, CHENNAI - 600 077

DEPARTMENT OF INFORMATION TECHNOLOGY

Faculty Course Assessment Report (FCAR)

Course Code	IT6801	Program	B.TECH/IT
Course Name	SERVICE ORIENTED ARCHITECTURE	Ac. Year	2018-2019 (EVEN)
Faculty Name	Mrs.A.M.SERMAKANI	Section	-

I. COURSE OUTCOMES:

CO	DESCRIPTION
I801.1	Build applications based on XML.
I801.2	Develop web services using technology elements.
I801.3	Build SOA-based applications for intra-enterprise and inter-enterprise applications.
I801.4	Design, develop and test Web services.
I801.5	Learn approaches to compose services.
I801.6	Evaluate emerging and proposed standards for the main components of Web services architecture

II. COURSE OUTCOMES AND ASSESSMENT METHODS:

COURSE OUTCOMES	Contribution	ASSESSMENT METHOD			
		DIRECT METHOD		INDIRECT METHOD	UNIVERSITY RESULTS
		Assessment Tool	Contribution	Tool & Contribution Course End Survey	Contribution
CO1	15%	IA1	10%	3%	20%
		IA3			
		Assign/Quiz			
CO2	15%	IA1	10%	3%	
		IA3			
		Assign/Quiz			
CO3	15%	IA2	10%	3%	
		IA3			
		Assign/Quiz			
CO4	15%	IA2	10%	3%	
		IA3			
		Assign/Quiz			2%
CO5	10%	IA3	6%	2%	
		Assign/Quiz	2%		
CO6	10%	Online Quiz/ GL/ IV/ Seminar /Online Assignment	8%	2%	NA

UNIVERSITY CONTRIBUTION (20%)

Target level	Attainment level	Overall Attainment in %
1*	1	E,D - 2
2**	2	C - 10
3***	3	B,A - 40

* NUMBER OF STUDENTS WHO SECURED D & E Grade.

** NUMBER OF STUDENTS WHO SECURED B & C Grade.

*** NUMBER OF STUDENTS WHO SECURED A & S Grade.

$((*X(1/3)+**X(2/3)+***X(3/3))/\text{Number of passed Students}) \times 4$

$((*X(1/3)+**X(2/3)+***X(3/3))/\text{Number of passed Students}) \times 4$

$= ((2(1/3) + 10(2/3) + 40(3/3))/52) *4$

$= (0.666+6.66+40)/52 *4$

$= 3.64$

III. MAPPING OF COURSE OUTCOMES TO PROGRAM OUTCOMES:

Course Outcomes	PO 1	PO 2	PO 3	PO 4	PO 5	PO 6	PO 7	PO 8	PO 9	PO 10	PO11	PO 12
I801.1	3	3	1	0	1	0	0	1	1	0	2	2
I801.2	3	3	2	1	1	1	1	0	0	1	2	3
I801.3	2	2	1	1	2	2	2	2	1	0	2	2
I801.4	2	0	0	1	2	0	0	0	2	1	1	3
I801.5	2	2	2	2	1	1	2	2	1	0	1	2
I801.6	3	2	2	0	2	0	1	2	2	1	3	2
AVERAGE	2.5	2	1.33	0.83	1.5	0.67	1	1.17	1.17	0.50	1.83	2.33

Level of Mapping (3: Substantial, 2: Moderate, 1: Slight)

Course Outcomes	PO 1	PO 2	PO 3	PO 4	PO 5	PO 6	PO 7	PO 8	PO 9	PO 10	PO11	PO 12
I801.1	3	3	1	0	1	0	0	1	1	0	2	2
I801.2	3	3	2	1	1	1	1	0	0	1	2	3
I801.3	2	2	1	1	2	2	2	2	1	0	2	2
I801.4	2	0	0	1	2	0	0	0	2	1	1	3
I801.5	2	2	2	2	1	1	2	2	1	0	1	2
I801.6	3	2	2	0	2	0	1	2	2	1	3	2
AVG	2.5	2	1.33	0.83	1.5	0.67	1	1.17	1.17	0.50	1.83	2.33
Expected Attainment of PO in %	14.85%	11.88%	7.92%	4.95%	8.91%	3.96%	5.94%	6.93%	6.93%	2.97%	10.89%	13.86%

IV. MAPPING OF COURSE OUTCOMES TO PROGRAM SPECIFIC OUTCOMES:

PSO1: Professional and Problem-Solving Skills:

The ability to apply standard practices and strategies in software project development and efficient design of computer-based systems of varying complexity using open-ended programming environments to deliver a quality product for business success.

PSO2: Successful Career and Entrepreneurship:

The ability to employ modern computer languages, environments, and platforms in creating innovative career paths to be an entrepreneur, and to sustain passion and zeal for real-world applications

Course Outcomes	PSO1	PSO2
I801.1	2	2
I801.2	3	2
I801.3	2	2
I801.4	2	2
I801.5	2	2
I801.6	2	2
Average	2.17	2
Expected Attainment of PSO in %	13.13%	12.12%

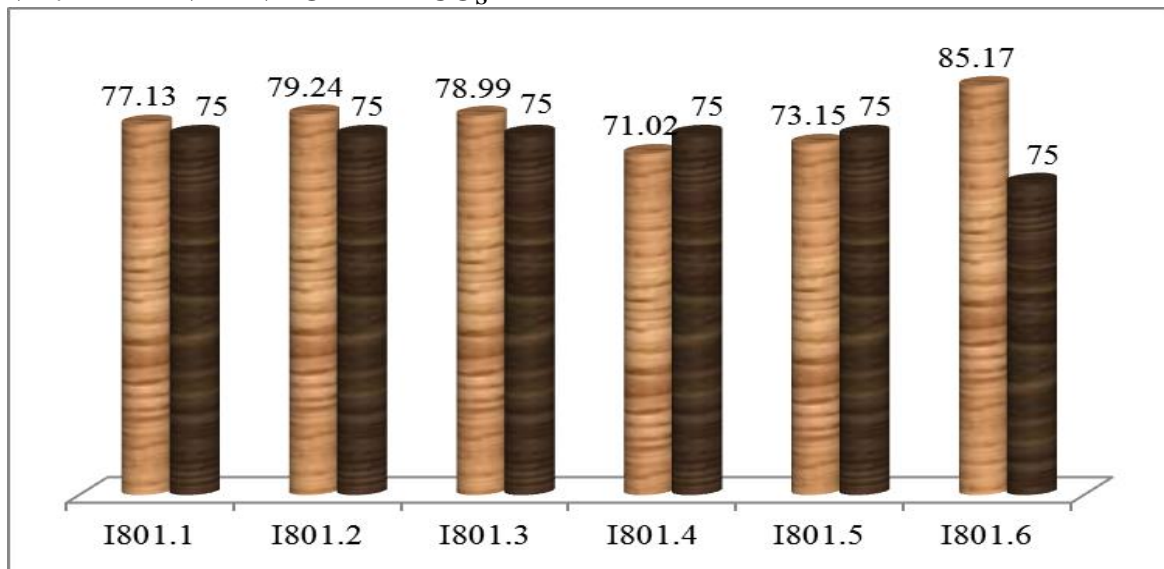
V. COURSE ASSESSMENT:

Course Outcome	Assessment Tool	Attainment of course outcomes (in %)	CO Average	Achievement (Target: 60 %)
CO1	IA1+IA3	6.828	77.13%	YES
	Assign/Quiz	1.727		
	Course End Survey	2.460		
	University Results	3.64		
CO2	IA1+IA3	7.313	79.24%	YES
	Assign/Quiz	1.762		
	Course End Survey	2.340		
	University Results	3.64		
CO3	IA2+IA3	7.233	78.99%	YES
	Assign/Quiz	1.735		
	Course End Survey	2.40		
	University Results	3.64		
CO4	IA2+IA3	5.685	71.02%	YES
	Assign/Quiz	1.769		
	Course End Survey	2.400		
	University Results	3.64		
CO5	IA3	3.210	73.15%	YES
	Assign/Quiz	1.750		
	Course End Survey	1.640		
	University Results	3.64		
CO6	Online Quiz	6.877	85.17%	YES
	Model Based Assignment	4.23		
	Course End Survey	1.640		

Note: % = Percentage of students who got 60% or more marks

Minimum Level for PO attainment: 75%

VII. ATTAINMENT OF THE COs



VIII. ATTAINMENT PO THROUGH CO

PO Attainment through CO = [CO1*(Level of mapping/3) + CO2*(Level of mapping /3)

+.....+

CO6*(Level of mapping /3)] / 6

PO 1	PO 2	PO 3	PO 4	PO 5	PO 6	PO 7	PO 8	PO 9	PO 10	PO11	PO 12
65.22	52.56	35.22	21.00	39.11	17.33	26.17	30.78	30.28	13.22	48.56	60.17

IX. ATTAINMENT PSO THROUGH CO

PSO Attainment through CO = [CO1*(Level of mapping/3) + CO2*(Level of mapping /3)+.....+

CO6*(Level of mapping /3)] / 6

PSO1	PSO2
56.035%	51.63%

DIRECT METHOD						
CO	I801.1	I801.2	I801.3	I801.4	I801.5	I801.6
CONTRIBUTION	12%	12%	12%	12%	8%	8%
IA+ASSIGNMENT	8.555	9.075	8.968	7.454	4.960	6.877
out of 100	71.29438	75.62406	74.72934	62.11939	41.33673	57.30769
out of 3	2.138831	2.268722	2.24188	1.863582	1.240102	1.719231

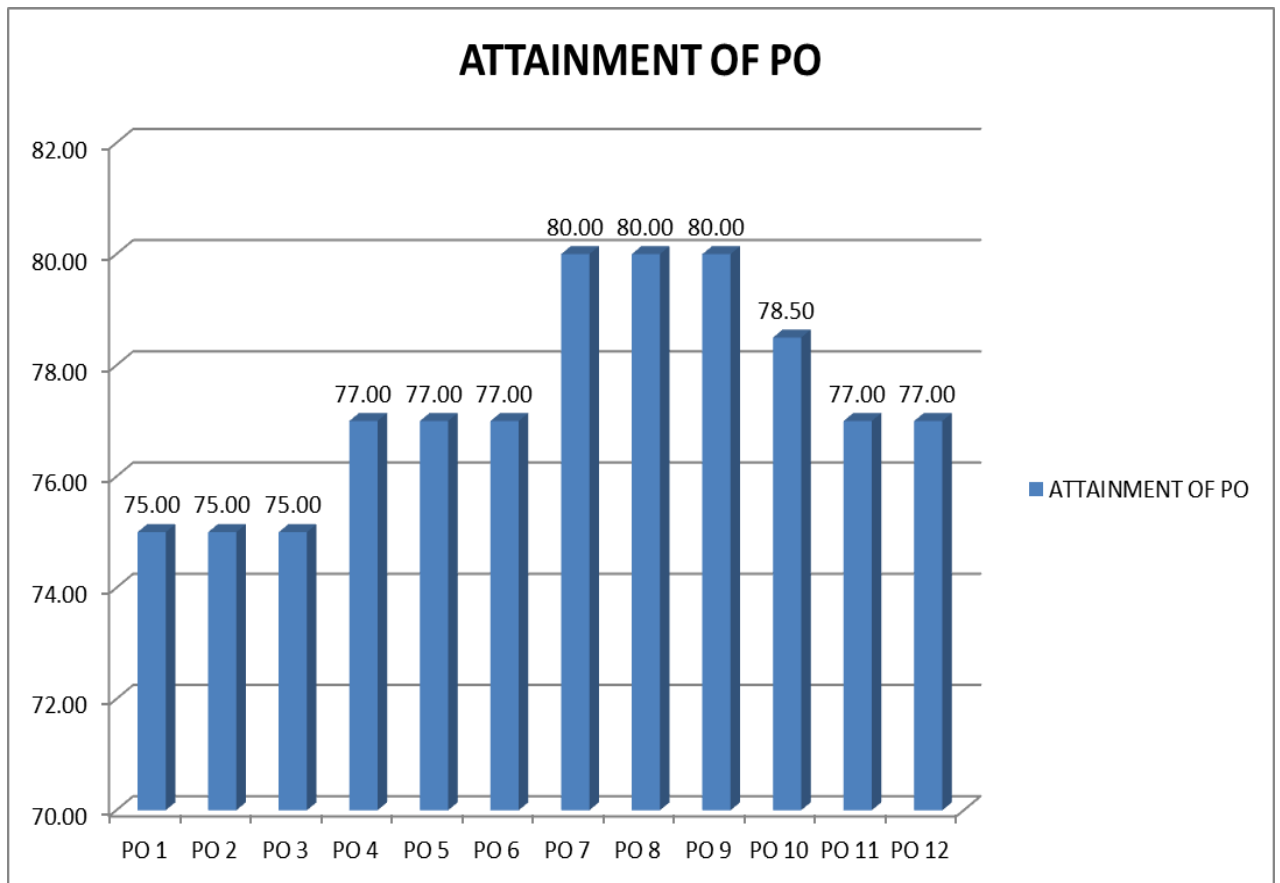
INDIRECT METHOD							
CO	I801.1	I801.2	I801.3	I801.4	I801.5	I801.6	
CONTRIBUTION	3%	3%	3%	3%	3%	3%	AVERAGE
COURSE END SERVEY	4.1	3.9	4	4	4.1	4.1	4.033333
out of 5	0.82	0.78	0.8	0.8	0.82	0.82	0.806667
out of 100	82	78	80	80	82	82	80.66667
out of 3	2.46	2.34	2.4	2.4	2.46	2.46	2.42

S.A.ENGINEERING COLLEGE							
DEPARTMENT OF INFORMATION TECHNOLOGY							
ALUMNI SURVEY							
ACADEMIC YEAR : 2018-2019					BATCH: 2014-2018		
S.No	QUESTIONS					POs	PEOs
1	I have the technical Skills required for my job assignments					1,2,3	1
2	I have the ability to use the techniques and tools necessary for successful professional practise					4,5,6	2
3	I have the ability to communicate effectively both verbally and in writing					7,8,9,10	3
4	I have the ability to function on multi-disciplinary teams					10,11,12	4
S.NO	NAME	BATCH	Q1	Q2	Q3	Q4	
1	R.KARTHIKEYAN	2014-2018	3	4	5	4	
2	PRABHAKARAN	2014-2018	4	4	4	4	
3	ROHITH BABU	2014-2018	3	3	5	4	
4	M.ARI SHANKAR	2014-2018	4	4	4	4	
5	J.POOJA	2014-2018	3	4	5	4	
6	M.PRIYANKA	2014-2018	4	4	4	4	
7	E.RACHEL GRACE	2014-2018	5	4	4	4	
9	G.VARALAKSHMI	2014-2018	5	5	4	5	
10	K.SINDHUJA	2014-2018	4	3	5	4	
11	D.S.NANDHINI	2014-2018	3	4	4	4	
12	MADHUMATHI	2014-2018	4	4	3	4	
13	D.THULASI PRIYA	2014-2018	4	4	5	4	
14	J.RAKESH	2014-2018	4	4	4	3	
15	R.DEVI PRIYA	2014-2018	4	4	4	5	
16	M.MALATHY	2014-2018	5	5	4	4	
17	S.VISHNU PRIYA	2014-2018	5	5	5	5	
18	K.V.BAVYA	2014-2018	4	4	4	4	
19	BHARTHIBAN.G	2014-2018	4	4	3	4	
20	C.PAVITHRA	2014-2018	3	4	4	3	
			3.75	3.85	4.00	3.85	
	Program Outcomes (PO)		1,2,3	4,5,6	7,8,9,10	10,11,12	
	Program Educational Objectives (PEO)		PEO 1	PEO 2	PEO 3	PEO 4	
	If the rating is greater than 3.5		yes	yes	yes	yes	

BATCH :2014-2018

Program Outcome (PO)	PO 1	PO 2	PO 3	PO 4	PO 5	PO 6	PO 7	PO 8	PO 9	PO 10	PO 11	PO 12
Corresponding questions	1	1	1	2	2	2	3	3	3	3,4	4	4
Target	3.5	3.5	3.5	3.5	3.5	3.5	3.5	3.5	3.5	3.5	3.5	3.5
Attainment	3.75	3.75	3.75	3.85	3.85	3.85	4.00	4.00	4.00	3.93	3.85	3.85
in %	75.00	75.00	75.00	77.00	77.00	77.00	80.00	80.00	80.00	78.50	77.00	77.00
ALUMNI SURVEY(10%)	7.50	7.50	7.50	7.70	7.70	7.70	8.00	8.00	8.00	7.85	7.70	7.70

PO 1	PO 2	PO 3	PO 4	PO 5	PO 6	PO 7	PO 8	PO 9	PO 10	PO 11	PO 12
75.00	75.00	75.00	77.00	77.00	77.00	80.00	80.00	80.00	78.50	77.00	77.00



EMPLOYER SURVEY - QUESTIONS & MAPPING

ACADEMIC YEAR: 2018-2019

S.No	QUESTIONS	POs	PEOs
1	Job Knowledge	1,3,5	2
2	Job Performance	2,4,8	2, 3
3	Learning Interest	4	2
4	Punctuality & Attendance	5,9	4
5	Creative Ability	6,10	4
6	Communication /Feed Back	8	3
7	Technical Skills	4,5,6	2
8	Analytical Skills	2,4,6	2, 3
9	Interpersonal Skills	7,11,12	1
10	Initiative & Leadership	2,4,5	2

BATCH :2014-2018

Program Outcome (PO)	PO 1	PO 2	PO 3	PO 4	PO 5	PO 6	PO 7	PO 8	PO 9	PO 10	PO 11	PO 12
Corresponding questions	1	2,8,10	1	2,3,7,8,10	1,4,7,10	5,7,8	9	2,6	4	5	9	9
Target	3.5	3.5	3.5	3.5	3.5	3.5	3.5	3.5	3.5	3.5	3.5	3.5
Attainment	4.00	3.83	4.00	3.85	4.06	3.58	4.00	3.75	4.50	3.50	4.00	4.00
in %	80.00	76.67	80.00	77.00	81.25	71.67	80.00	75.00	90.00	70.00	80.00	80.00
EMPLOYER SURVEY(10%)	8.00	7.67	8.00	7.70	8.13	7.17	8.00	7.50	9.00	7.00	8.00	8.00

PO 1	PO 2	PO 3	PO 4	PO 5	PO 6	PO 7	PO 8	PO 9	PO 10	PO 11	PO 12
80.00	76.67	80.00	77.00	81.25	71.67	80.00	75.00	90.00	70.00	80.00	80.00

ATTAINMENT OF PO

